

luigi morleo

concerto per marimba e archi

(1993) parte per sola marimba

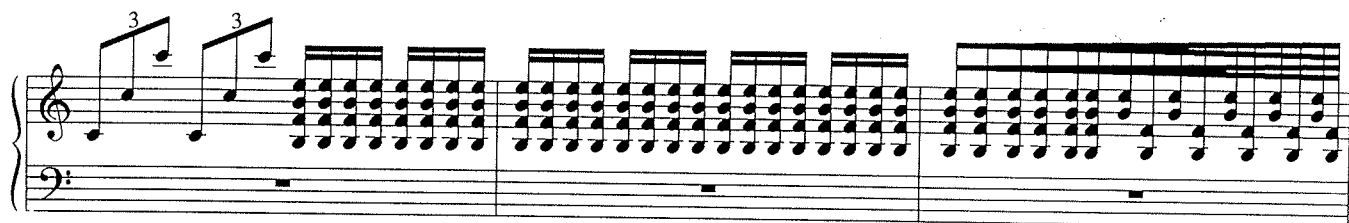
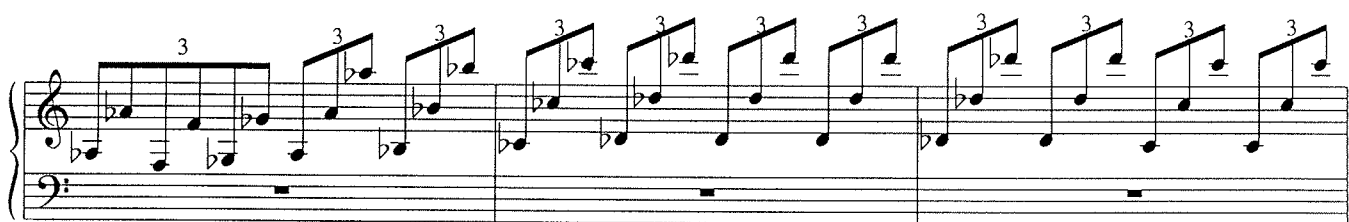
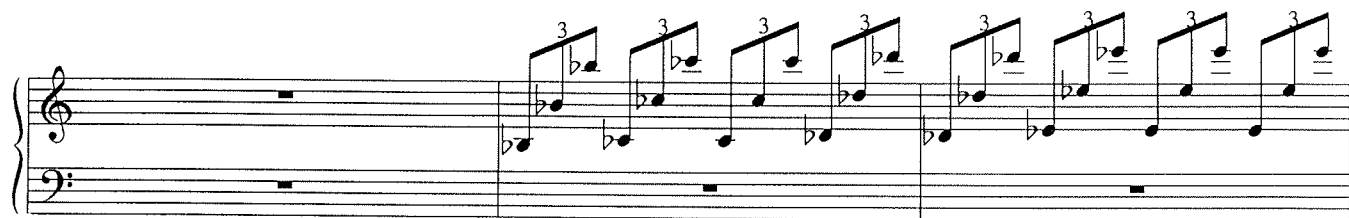
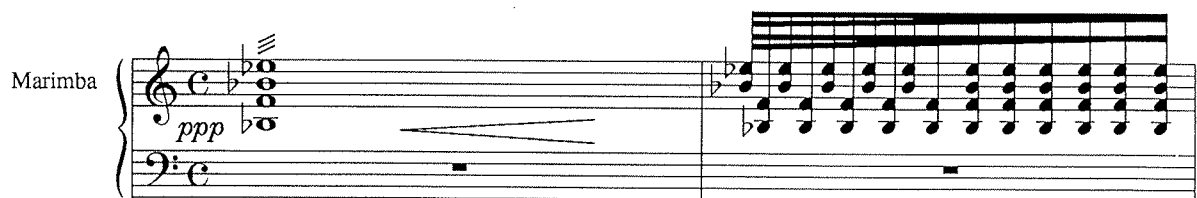
luigi morleo

concerto per marimba e archi

parte per sola marimba

♩ = 80

Marimba



The image displays a musical score for a piano accompaniment, likely for a song titled "The Rose Tree" based on the lyrics provided. The score is written for a piano, with a treble staff and a bass staff. The key signature is G major (one sharp, F#), and the time signature is 4/4. The score is divided into two main sections, A and B, indicated by large letters above the staves.

Section A: This section consists of four systems of music. The first system includes a key signature change from G major to F major (one flat, Bb). The music features a melodic line in the treble staff and a supporting bass line in the bass staff. The melody is characterized by a series of eighth and sixteenth notes, often beamed together. The bass line provides a steady harmonic foundation with a mix of quarter and eighth notes.

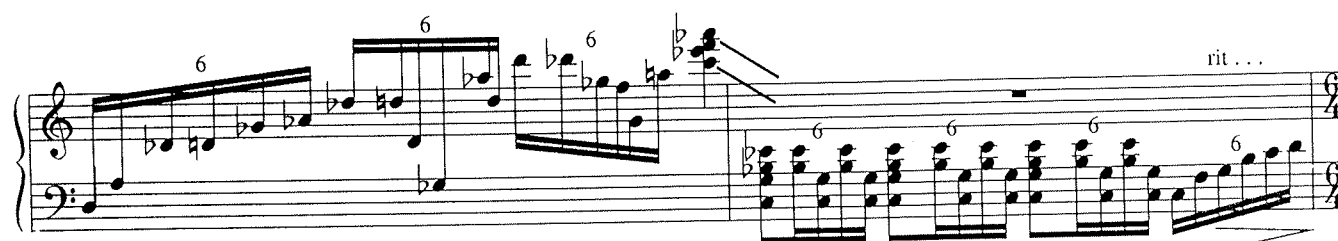
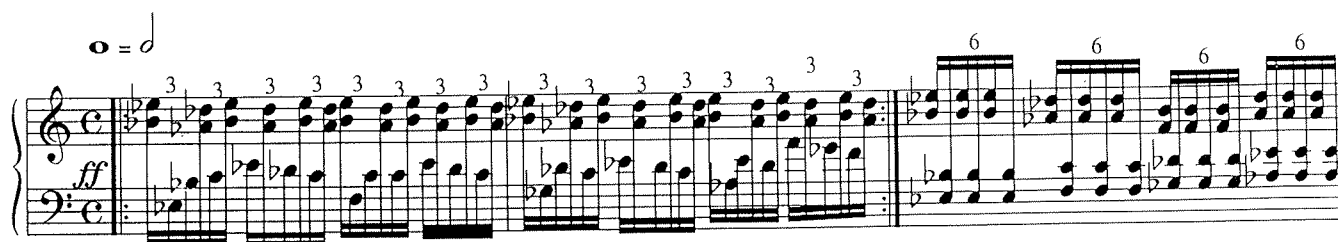
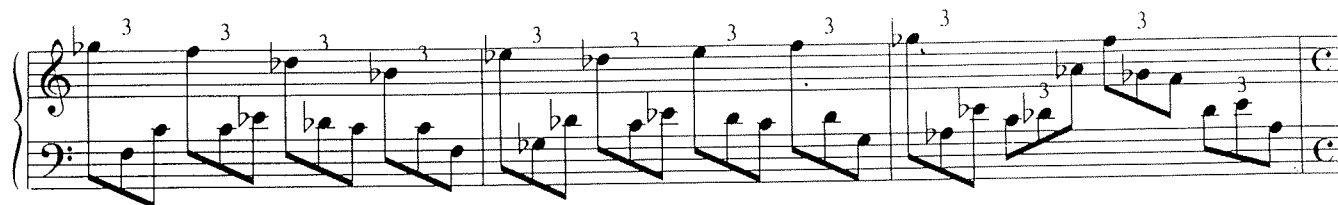
Section B: This section consists of three systems of music. It continues the melodic and harmonic themes established in Section A, with the treble staff carrying the primary melody and the bass staff providing accompaniment. The notation includes various musical symbols such as slurs, ties, and dynamic markings like *mp* (mezzo-piano).

The lyrics "The Rose Tree" are written below the first system of Section A, indicating the song's title and the beginning of the vocal line.

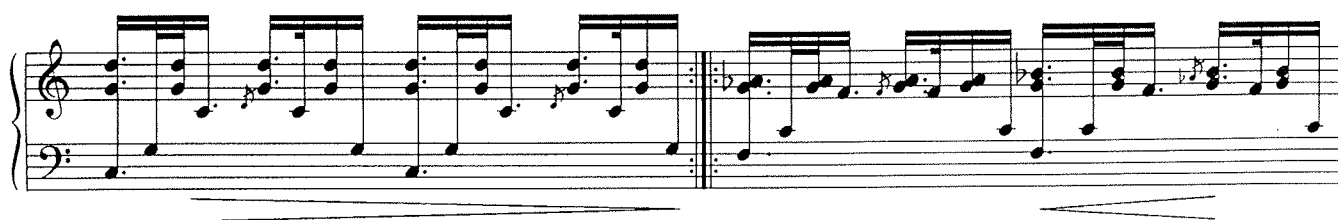
Poco Meno

3

8^{va}



MENO





La parte di legno dell'abacchetta sul bordo del tasto

