

luigi morleo

eko

(1994) per marimba un esecutore

a filippo lattanzi

Ekò

luigi morleo

System 1: Tempo 48. Key signature: one flat. Piano part with complex rhythmic patterns and many accidentals. Dynamic markings: *pp*, *L.D.S.*

System 2: Tempo 69. Key signature: two flats. Piano part with complex rhythmic patterns and many accidentals. Dynamic markings: *sfx*, *pp*

System 3: Tempo 48. Key signature: two flats. Piano part with complex rhythmic patterns and many accidentals. Dynamic markings: *molto*, *mp*, *f*

System 4: Tempo 48. Key signature: two flats. Voice and marimba parts. Dynamic markings: *mf*, *mf*

voce

mf

molto

mf

molto

voce

mf

mp

voce

voce

voce

voce

VOCE

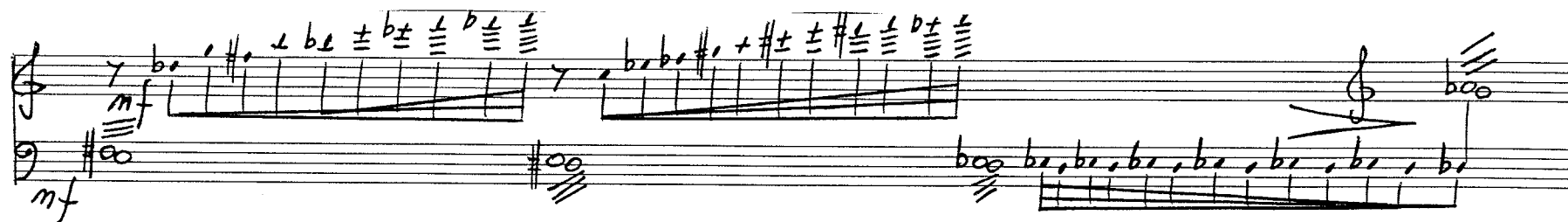
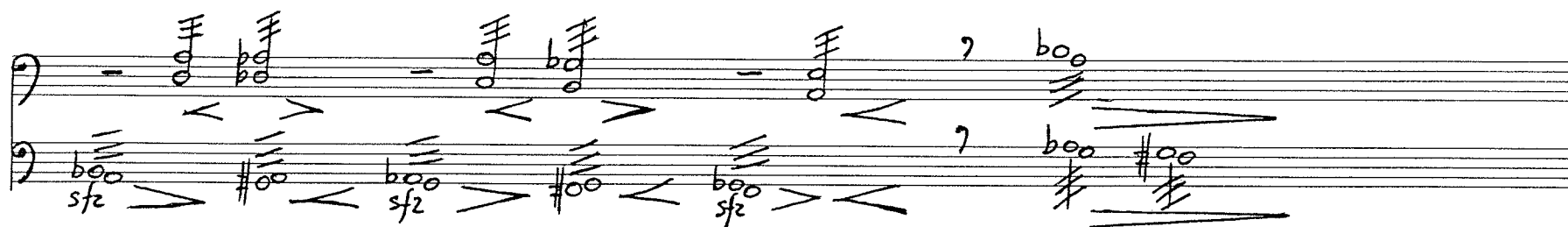
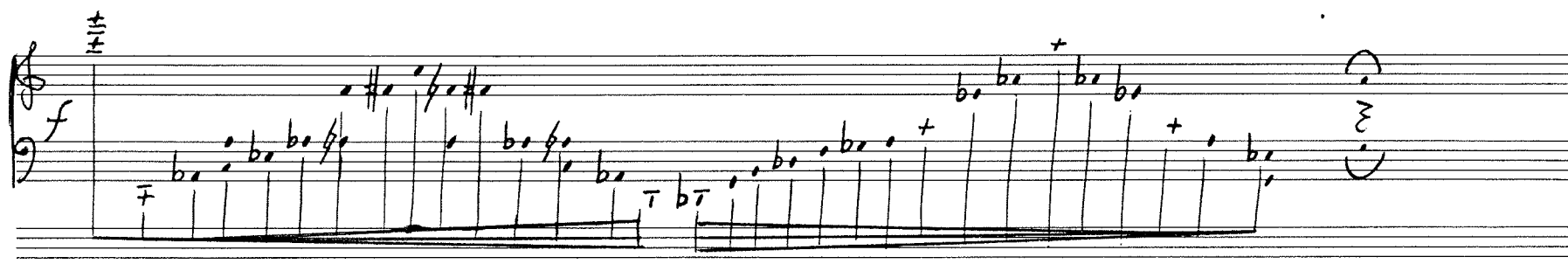
Handwritten musical score for the first system. The vocal line (VOCE) is written on a single staff. The piano accompaniment is on a grand staff. The vocal line has a 13-second measure marked. The piano part includes various chords and a section marked 'L.D.S.' with a 'pp' dynamic.

VOCE

Handwritten musical score for the second system. The vocal line (VOCE) is written on a single staff. The piano accompaniment is on a grand staff. The vocal line has a 13-second measure marked. The piano part includes triplets, a 'sfz' dynamic, and a section marked 'L.D.S.' with a 'pp' dynamic.

VOCE

Handwritten musical score for the third system. The vocal line (VOCE) is written on a single staff. The piano accompaniment is on a grand staff. The vocal line has a 13-second measure marked. The piano part includes a 'mf' dynamic, a 'sfz' dynamic, and a section marked 'L.D.S.' with a 'pp' dynamic.



voce

SOLO 2^a 3^a VOLTA

curcendo

$\text{♩} = 100$

mp *mf* *f*

12 7

voce

3

3

12 7

voce

5

5

12 7

Handwritten musical score for a piece titled "VOCAL". The score is written on a grand staff with a vocal line and a piano accompaniment. The key signature is B-flat major (two flats) and the time signature is 3/4. The piano part features a complex, rhythmic accompaniment with many beamed notes and slurs. The vocal line is written in a single staff with a treble clef. The score includes a key signature change to B-flat major and a 3/4 time signature. The piano part features a complex, rhythmic accompaniment with many beamed notes and slurs.

Handwritten musical score for 'The Rose Tree'. The score is written on two staves. The upper staff is a treble clef with a key signature of one flat (B-flat). The lower staff is a bass clef. The music is in 2/4 time. The melody is written in the upper staff, and the bass line is written in the lower staff. The melody consists of a series of eighth and sixteenth notes, with some rests. The bass line consists of a series of eighth and sixteenth notes, with some rests. The score is written in a simple, handwritten style.

Handwritten musical notation for a piano exercise, featuring a treble and bass staff with various chords and melodic lines. The notation includes notes, rests, and dynamic markings such as mf and f .

Handwritten musical score for three systems. The first system has two staves with complex notation including slurs, accents, and dynamic markings like "b±". The second system continues with similar notation and includes a large "V" symbol. The third system features a "L D. S." marking and a section labeled "con 8va" with a treble clef staff.

legenda:

≈ = ripetere sempre fino ad un nuovo segno

└D.S.┐ = suonare tutto il gruppo col "dead stroke"

x_x x x = colpire col legno della bacchetta sul bordo dei tasti