

daniele faziani

suoni ritmici
per sassofono contralto in mib
suoni puri
per sassofono soprano

(1991) per sassofoni contralto e soprano

suoni ritmici (1991)

per sassofono contralto in mib

malintendendo con spirito

Handwritten musical score for "Missa Solenne" by Giuseppe Verdi. The score is written on five staves. The first staff is a vocal line with notes and rests, accompanied by dynamic markings like "PPP" and "TA". The second staff is a piano accompaniment line with notes, rests, and dynamic markings like "sf", "P 6", "f", and "TF". The third staff is a piano accompaniment line with notes, rests, and dynamic markings like "sf", "ppp", and "TF". The fourth staff is a piano accompaniment line with notes, rests, and dynamic markings like "sf", "ppp", and "TF". The fifth staff is a piano accompaniment line with notes, rests, and dynamic markings like "sf", "ppp", and "TF". The score includes tempo markings like "4 SECONDI" and "4 SECONDI".

IMPROVVISARE CON LE NOTE SEGUENTI

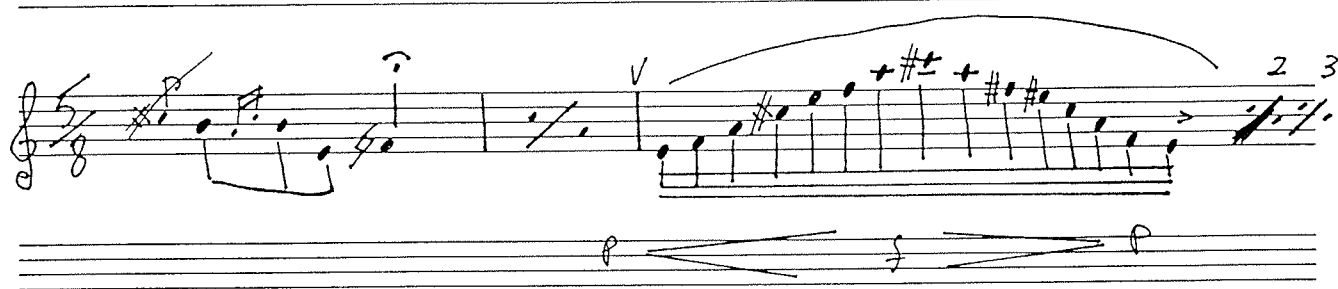
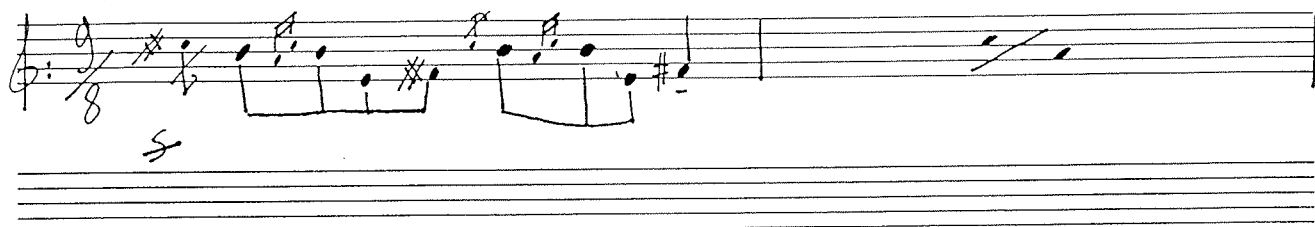
(30 SECONDS)
CIRCA

-RITMO LIBERO-

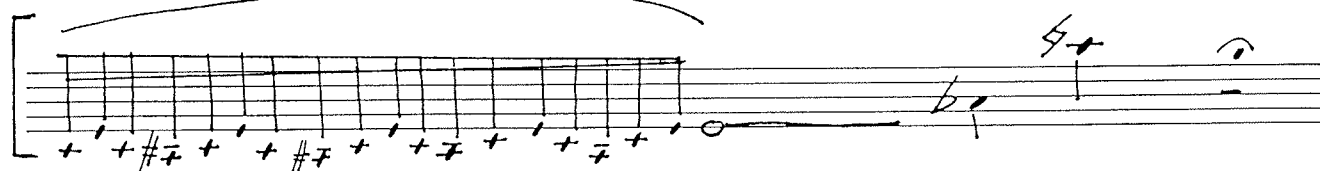
Handwritten musical notation on a five-line staff. The notation includes various rhythmic markings (e.g., "TA", "X", "3", "4") and dynamic markings (e.g., "8^a", "SOTTO", "SP", "SENZA VIRATO"). The notation is written in a stylized, handwritten manner.

suoni puri (1991)
per sassofono soprano

ENERGICO - e RITMICO



AD LIBITUM



man mano più libero

- IMPROVVISARE IN MODO LIBERO -
CON LENOTE - SUONATE IN PRECEDENZA

20 SECONDI

Handwritten musical score on five staves. The first staff contains two melodic lines with many accidentals and a fermata. The second staff has a 'p' dynamic marking and a 'TRW C3 SEQUE' annotation. The third staff includes a '12/8' time signature, a 'p' dynamic marking, and the instruction 'OTTAVA: BASSA.' The fourth and fifth staves are empty.

- DURATA - 2 minuti